

Scope of Work

- I. Scope of Solicitation**
- II. Instructions for Submissions**
- III. Scope of Work / Specifications**
- IV. Terms and Conditions - Special**
- V. Bidding Schedule**

I. SCOPE OF SOLICITATION

This request for proposal is being issued to obtain a refit of the lower sewer pump station at the Clemson Outdoor Lab in Pendleton, SC. Included with this RFP will be a power conversion system for the same pump station. The power conversion system work may be performed at a different time than the pump refit. The successful submitter will work with Clemson's team to meet the requirements.

II. INSTRUCTIONS FOR SUBMISSIONS

Regardless of specific requirements below or in this document, Submitters are required to enter their proposal electronically through the Clemson University online bidding system. To do so you must login (registering first) at <https://sciquest.ionwave.net/prod/default.aspx?company=clemson>, and follow specific instructions for this solicitation. You should register several days in advance of the bid closing date so you can be approved and login in time to submit a response.

- A. INFORMATION FOR SUBMITTING** - In addition to information requested elsewhere in this solicitation, Submitters should include the following information for evaluation purposes:
 - 1. Technical Proposal Outlining Submitter's Qualifications – to include description of your overall capabilities, any certifications that may be applicable, and pertinent past experience. The technical proposal should contain a statement of qualifications in similar applications, and an outline of the services you are offering for this contract. Submit as an attachment in the online bidding system. Do not include any pricing in your Technical Proposal Attachment.
 - 2. Cost proposal (Enter pricing under the 'Line Items' tab of the online bidding system).
 - The cost of the proposed solutions must be submitted separately from the technical proposal.
 - Rates must be all inclusive and include any travel, lodging, or other indirect expenses.
- B.** Please follow submittal requirements outlined in the Bid Attributes in the online bidding system for breakdown of proposals and number of copies that must be submitted.
- C.** The successful Submitter shall provide satisfactory evidence of all required insurance coverage after the award (not required with Technical Proposal).

III. SCOPE OF WORK / SPECIFICATIONS

A. Background

We are having some sewer lift station issues that need to be addressed.

B. General Description of the Service

1. Parts and Labor to Refit lower sewer pump station

Equipment & Parts:

- 2 new pump base elbow assemblies with pump adaptors and hardware
- 2 new stainless steel upper guide rail brackets
- All new stainless steel guide rails
- All new stainless steel 2 inch discharge piping and fittings in wet well
- All new stainless steel piping from wet well to existing piping in valve vault
- Stainless steel anchors
- Hydraulic cement and wall sealers
- Misc. supplies as required
- Freight and Shipping

Installation:

- Labor to remove existing equipment and install new items listed
- Confined space entry services
- Small backhoe on site for excavation around wet well
- Milage, travel, etc.

Notes:

- contractor will provide a 8 inch gravity line plug
- Clemson to provide vac truck or bypass pumping from manhole beside station
- contractor will provide small backhoe for excavation
- Clemson to provide location services for underground items

Review the pictures and comments at:

<https://plus.google.com/photos/116318638173970621158/albums/5936150243778748433>

2. Parts and Labor to replace phase conversion system for pump electrical power
 - New duplex VFD panel to mount in place of old RONK unit
 - Modification of mounting rack and conduits
 - Necessary power and control wiring
 - Set up of new unit to match pump operation
 - Labor on site to remove existing old equipment and install above new items

Note: The pumps are rated at 7.5hp, for phase conversion VFD frames must be oversized to allow operation on just 2 phases of power, in this case the VFD units will be 15hp models.

Review the pictures and comments at:

<https://plus.google.com/photos/116318638173970621158/albums/5936150243778748433>

C. Capabilities and Qualifications

All work performed must meet customarily accepted industrial standards and practices and is subject to verification to those standards and practices by Clemson University or its designated agent prior to acceptance. Include electrical and confined space certifications with your technical proposal.

IV. TERMS AND CONDITIONS – SPECIAL

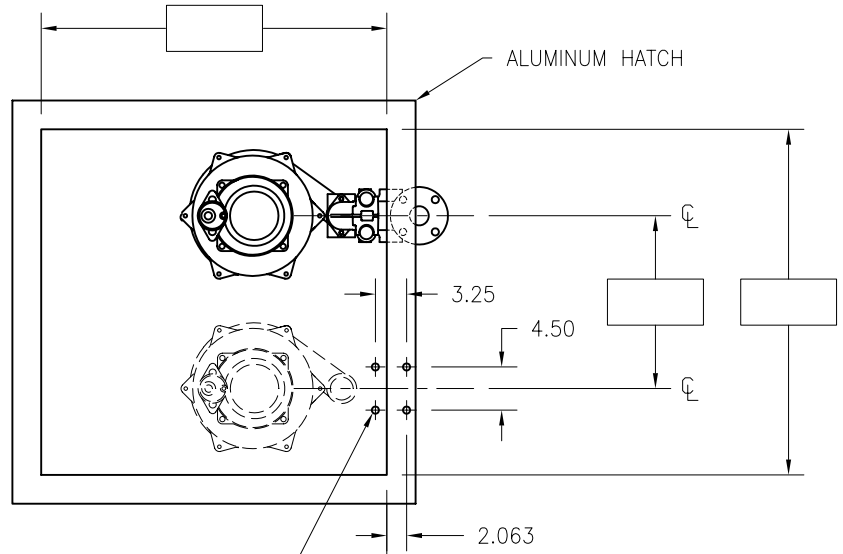
A. AWARD CRITERIA: Submissions will be evaluated using only the factors stated below. Evaluation factors are stated in the relative order of importance, with the first factor being the most important. Once evaluation is complete, all responsive Offertory will be ranked from most advantageous to least advantageous.

1. Cost (50%)
2. Evaluation of documented statement of qualifications in similar applications and relevant certifications (25%)
3. Evaluation of solution offered for this contract (25%)

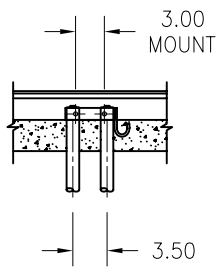
B. Award Process: Clemson University will award the initial contract to the highest ranked responsive and responsible Submitter based on the criteria outlined above.

V. BIDDING SCHEDULE

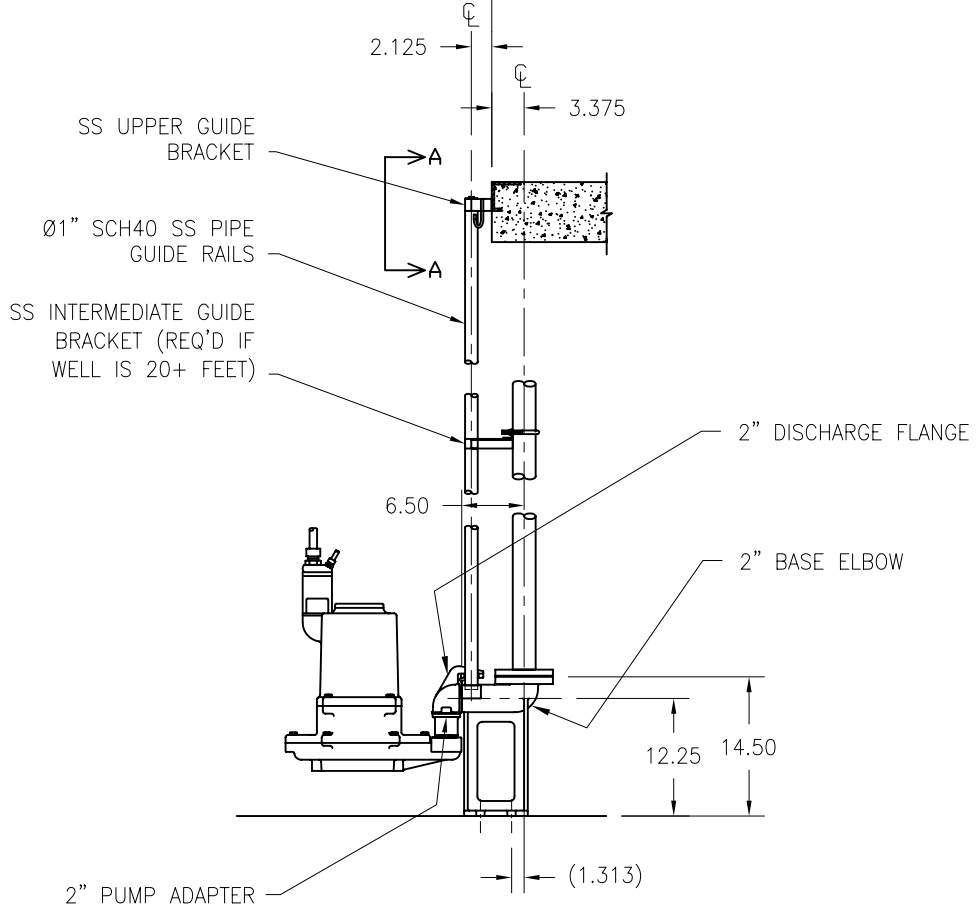
Please complete the bidding schedule under the 'Line Items' tab of our online bidding system as your Cost Proposal to be used for comparison purposes.



Ø0.75x5.50 ANCHOR BOLTS
4 PLACES PER BASE ELBOW



VIEW A-A



NOTE: ALL DIMENSIONS IN INCHES

		DRAWING NOT RELEASED UNTIL APPROVED & DATED		BARNEY'S PUMPS, INC.	
				PHONE: (863) 665-8500	
				PO BOX 3529, LAKELAND, FL 33802	
				FAX: (863) 666-3858	
		APPROVAL SIGNATURE		TITLE 2" DUPLEX RAIL SYSTEM	
				MATERIAL -	
		APPROVAL DATE		SALESPERSON -	
A		REVISED DIMENSION		DWG. #	
		09/18/2001		A-1022	
REV.		REVISION DESCRIPTION		REV.	
		DATE		A	
		DWG. SCALE		DWG. BY	
		1 TO 20		S. TOWLES	
				DATE	
				09/06/2001	